



# The Ingleton

Made for slow mornings, why not enjoy a second cup of coffee and savour the conversation at the breakfast bar? Thoughtful design ideas and chic modern touches, from entrance seat and storage to hotel-inspired comforts, mean you can live every day away in style.





*Step in and chill out*

Please note: Some items featured in this photography are scene-setting props or optional extras, not included in your purchase. Please speak to your park or dealership or refer to the 'all this included' section for this holiday home.





# The Ingleton

If you know this holiday home's stylish design is for you, there's only one thing left to do. Decide now, which of our four fantastic layouts will you choose?



For more information and to take a virtual tour, visit [www.abiuk.co.uk](http://www.abiuk.co.uk)

## All this included

- ✓ Matt finish Chateaux grey aluminium cladding
- ✓ Pre-galvanised twin axle chassis
- ✓ White 'Low E' PVCu Thermaglass double glazing
- ✓ Fully condensing boiler gas central heating
- ✓ Free-standing dining table and 4 chairs (2 bedroom model) & 6 chairs (3 bedroom model)
- ✓ Breakfast style chairs
- ✓ Satellite co-ax
- ✓ USB socket in lounge
- ✓ Scatter cushions in lounge
- ✓ Voiles throughout
- ✓ Soft-close drawers in kitchen drawers throughout
- ✓ 40mm worktops
- ✓ Integrated fridge freezer
- ✓ Externally vented powered cooker hood
- ✓ Lift-up bed in master bedroom
- ✓ TV point in all bedrooms
- ✓ USB sockets in all bedrooms
- ✓ King size bed in master bedroom (2 bedroom model only)
- ✓ En suite shower (2 bedroom model only)
- ✓ En suite toilet

- ✓ Bathroom extractor fans
- ✓ Shaver socket
- ✓ Additional sockets next to TV point in lounge
- ✓ Coat hooks in all bathrooms
- ✓ Entrance seat and coat storage area
- ✓ Composite kitchen sink
- ✓ Breakfast bar
- ✓ Full front sliding doors

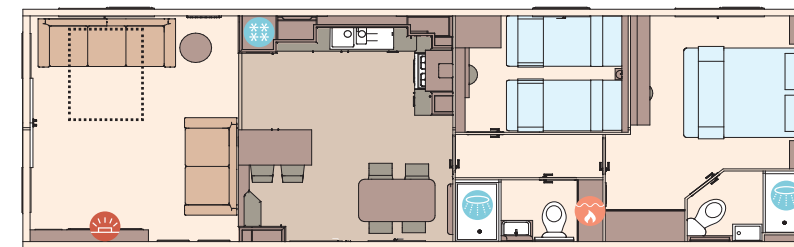
## Add any of these

- Upgrade to 13ft wide with BS3632 residential specification
- Deluxe Bluetooth sound system
- 'Exclusive' pocket sprung mattresses
- Space saver bed for twin room
- Integrated washing machine
- Integrated dishwasher
- Integrated microwave oven
- Fully galvanised chassis
- CanExel™ exterior cladding

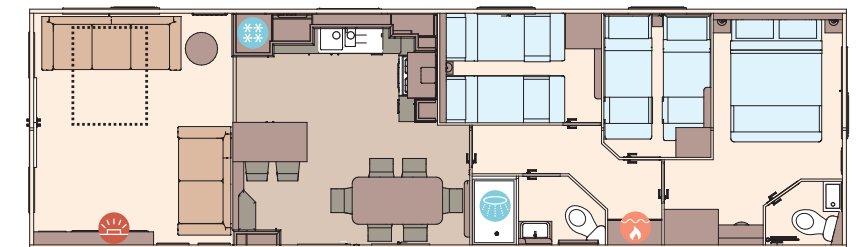


## Highlights:

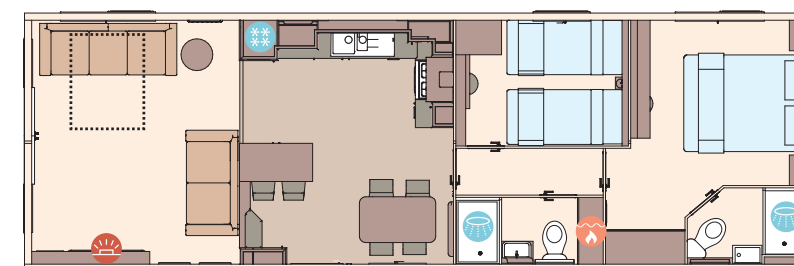
- Stylish holiday home in 12ft and 13ft models
- Open-plan family home with breakfast bar
- Option to upgrade to BS3632 residential specification
- Updated colour scheme for 2024



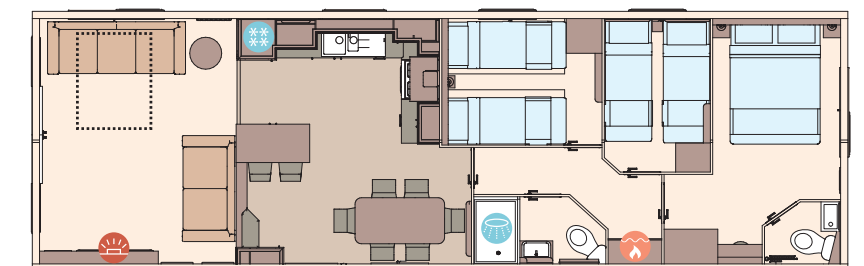
The Ingleton 40ft x 12ft x 2 bedroom



The Ingleton 41ft x 12ft x 3 bedroom



The Ingleton Residential 40ft x 13ft x 2 bedroom



The Ingleton Residential 41ft x 13ft x 3 bedroom

KEY: Fire Water heater Shower Fridge/Freezer Front pull out bed

OPTIONAL  
Residential  
specification  
BS3632  
See Page 86

OPTIONAL  
WINTER  
PACKS  
See Page 86