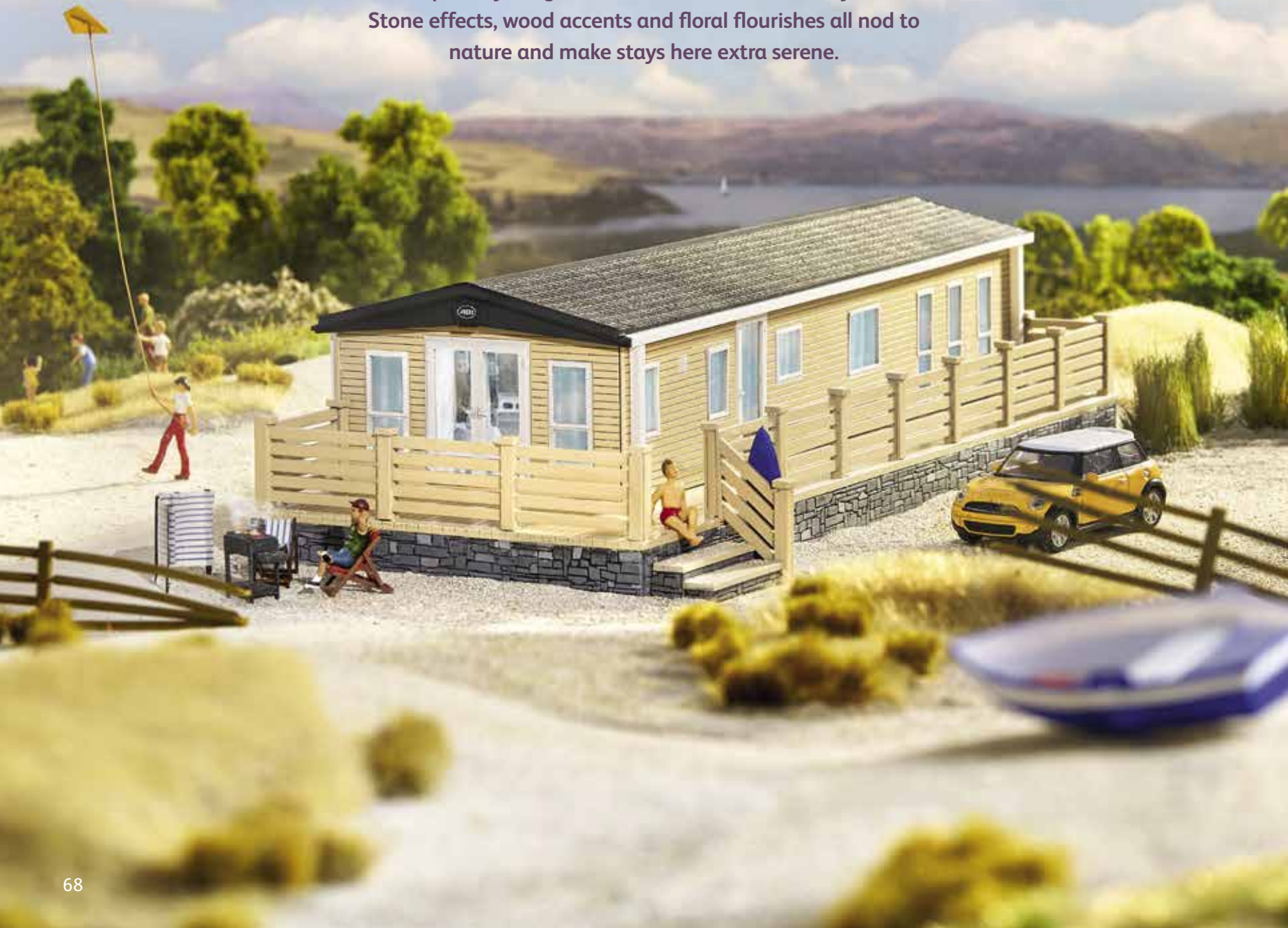


THE BEAUMONT

For the bliss seekers


From its luxurious interior to the tranquility found on its doorstep, everything about The Beaumont is utterly blissful. Stone effects, wood accents and floral flourishes all nod to nature and make stays here extra serene.





Highlights

- Updated colour scheme and new sofa for 2020-2021
- Luxurious furnishings and fittings throughout
- 14ft wide as standard with king size master bed and 3' beds in one twin
- Walk through dressing area and en suite bath or shower (2 bedroom model only)
- Optional larder unit
- Optional panoramic sliding doors

 To take an interactive virtual tour visit www.abiuk.co.uk



Shows 2 bedroom master bedroom



Shows panoramic sliding doors option



Optional larder unit



Enjoy an ABI Life.



The Beaumont

Brimming with little luxuries, helpful mod cons and with a choice of 2 or 3 bedrooms, this holiday home really is everything you could dream of.

For external CanExel™ Cladding option please visit www.abiuk.co.uk



For further information and to take an interactive virtual tour of The Beaumont visit www.abiuk.co.uk

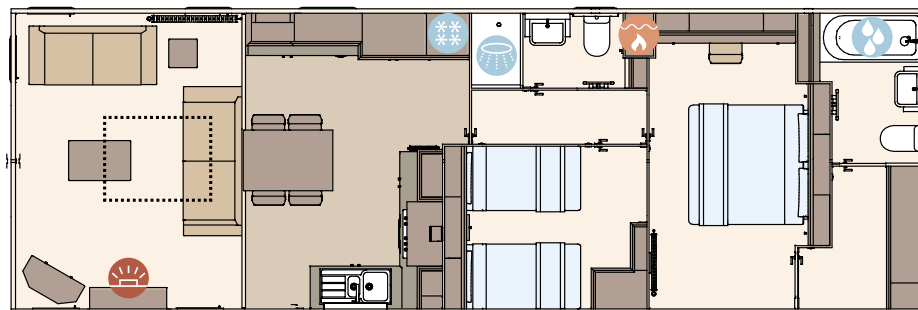
All this included

- ✓ Fully galvanised heavy-duty chassis
- ✓ Cappuccino hard PVCu cladding
- ✓ Front patio doors
- ✓ White 'Low E' PVCu Thermaglass double glazing
- ✓ Carpet underlay throughout
- ✓ Full condensing boiler gas central heating
- ✓ Voiles throughout
- ✓ Stylish domestic sofas
- ✓ Upholstered footstool
- ✓ Free-standing dining table and chairs
- ✓ Scatter cushions in lounge
- ✓ USB socket in lounge
- ✓ Satellite co-ax
- ✓ Additional sockets next to TV point in lounge
- ✓ 5 burner gas hob including wok burner
- ✓ 40mm worktops
- ✓ Composite kitchen sink
- ✓ Integrated fridge freezer
- ✓ Integrated dishwasher
- ✓ Integrated microwave
- ✓ Externally vented powered cooker hood
- ✓ Soft close hinges on doors and drawers throughout
- ✓ Lift-up bed in master bedroom
- ✓ King size bed in master bedroom
- ✓ Walk through dressing area in master bedroom (2 bedroom model only)

- ✓ Plain duvet covers and pillowcases
- ✓ Bed runners and scatter cushions on all beds
- ✓ USB sockets in all bedrooms (includes USB sockets on both sides of the main bed)
- ✓ TV point in all bedrooms
- ✓ En suite with domestic style bath (2 bedroom model only)
- ✓ Separate en suite shower and toilet (3 bedroom model only)
- ✓ Bathroom extractor fans
- ✓ Shaver socket
- ✓ Coat hooks in all bathrooms

Add any of these

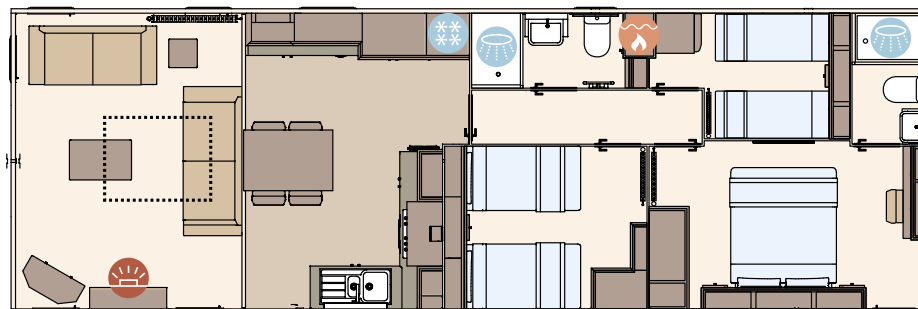
- Deluxe Bluetooth sound system
- 'Exclusive' pocket sprung mattresses
- Space saver bed for twin room
- Larder unit
- Integrated washing machine
- CanExel™ exterior cladding
- Residential specification BS3632
- Second bedroom as double instead of twin, bed includes lift-up storage
- Replace en suite bath with shower cubicle (2 bedroom model only)
- Front sliding door in lieu of French patio doors



The Beaumont 42ft x 14ft x 2 bedroom

KEY:

- Fire
- Water heater
- Shower
- Bath
- Fridge/Freezer
- Front pull out bed



The Beaumont 42ft x 14ft x 3 bedroom

OPTIONAL
Residential
specification
BS3632
See Page 83