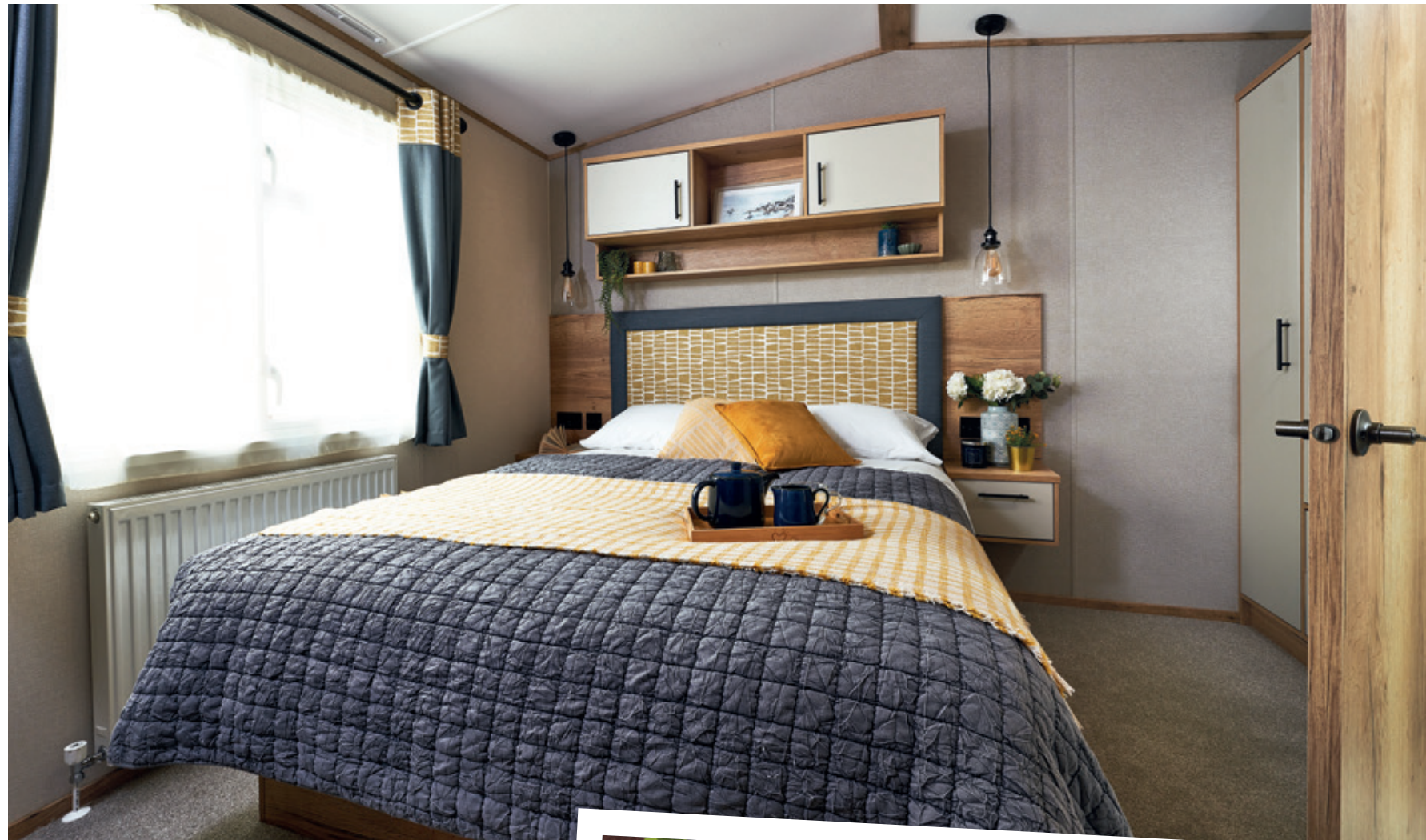




The St David

Entertain everyone, with statement kitchen lighting, chunky standout counters and an eye-catching and view-framing sink. Not to mention added style notes in textural fabrics throughout. You won't want to keep this all-new space to yourself.



Hasting has never been easier

Please note: Some items featured in this photography are scene-setting props or optional extras, not included in your purchase. Please speak to your park or dealership or refer to the 'all this included' section for this holiday home.



Shows optional full front sliding doors, see page 35

The St David

If this all-new holiday home designed for entertaining is your cup of tea, then it's time to pick the layout you love - there are three for you to choose from.



For more information and to take a virtual tour, visit www.abiuk.co.uk

All this included

- ✓ Matt finish Champagne aluminium cladding
- ✓ Carpet underlay throughout
- ✓ Stylish light fittings with low energy bulbs
- ✓ Electric fire
- ✓ USB socket in lounge
- ✓ Additional sockets next to TV point in lounge
- ✓ Free-standing dining table and chairs
- ✓ Externally vented powered cooker hood
- ✓ 40mm worktops
- ✓ Soft-close hinges on doors and drawers in kitchen
- ✓ Lift-up bed in master bedroom
- ✓ King size bed in master bedroom (2 bedroom models only)
- ✓ TV point in master bedroom and one twin room
- ✓ USB sockets in all bedrooms
- ✓ En suite shower (38ft x 12ft 2 bedroom model only)
- ✓ Bathroom extractor fans
- ✓ Separate en suite toilet
- ✓ Coat hooks in all bathrooms
- ✓ Composite kitchen sink
- ✓ Coffee table with cube stool

Add any of these

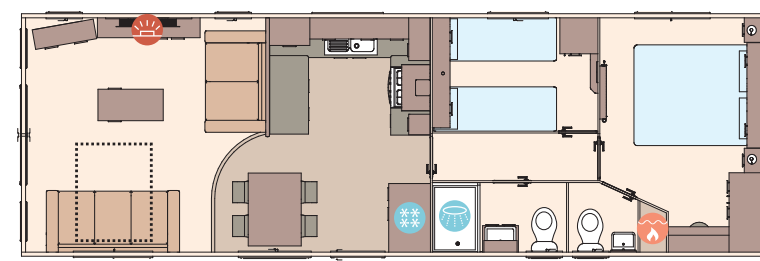
- Fully galvanised chassis
- 'Low E' PVCu Thermaglass double glazing
- Winter premium pack
- Winter electric pack
- Voiles throughout
- Free-standing fridge
- Free-standing or integrated fridge freezer
- Integrated microwave oven
- Integrated dishwasher or washing machine
- Plain duvet covers and pillowcases
- Scatter cushions in lounge
- Exterior door options available
- Bluetooth sound system in lounge
- 'Exclusive' pocket sprung mattresses
- Space saver bed (twin room only)



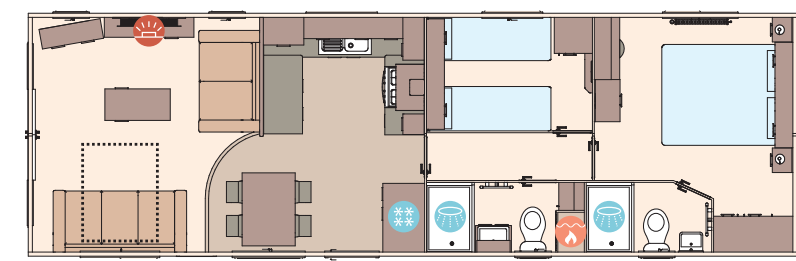
Shows optional full front sliding doors, see page 35

Highlights:

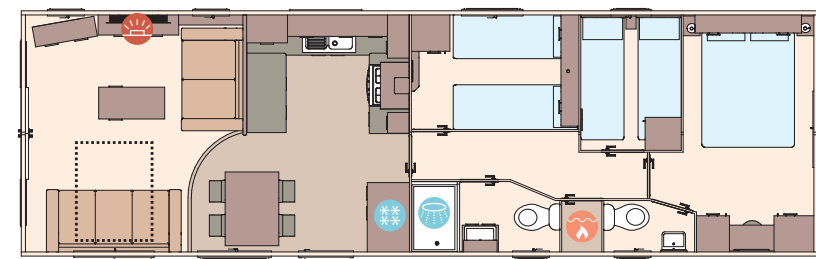
- Brand new model for 2024
- Spacious family home
- All models include en suite toilet
- En suite with shower in the 38ft x 12ft 2 bedroom model
- Home-from-home styling



The St David 37ft x 12ft x 2 bedroom



The St David 38ft x 12ft x 2 bedroom



The St David 39ft x 12ft x 3 bedroom

KEY:

- Fire
- Water heater
- Shower
- Fridge/Freezer
- Front pull out bed

OPTIONAL WINTER PACKS See Page 86